

Sentry (of Movement)

Contact: Paolo.Dondero@swhard.com



SWHARD italian start-up. *Expertise:* Software, Hardware, R&D, innovation & development services for a wide range of industrial applications.

- Sensors study and algorithm optimization
- Hardware engineering
- Real-time, cloud computing
- Software for mobile and PC



PROMIS@Service, spin-off of EC research results. *Expertise:*

- Open Innovation 2.0: eGovernment, eCompetence, eBusiness, Marketing
- Circular Economy of Knowledge
- Multilingual Integrated Compliance
- Multilingual Big Data, Enterprise 4.0
- Multichannel ePlatforms
- Dissemin. & Rollout of R&D results



University of Genoa (DINO GMI - Dept. of Neuroscience).

Expertise:

- movement kinematic
- Motoric control, education and ri-education
- motoric performance in sport & rehabilitation
- Joints disease prevention
- Scientific Coordination

Project idea

The Problem

Articular and movement diseases are increasing with age causing problems like:

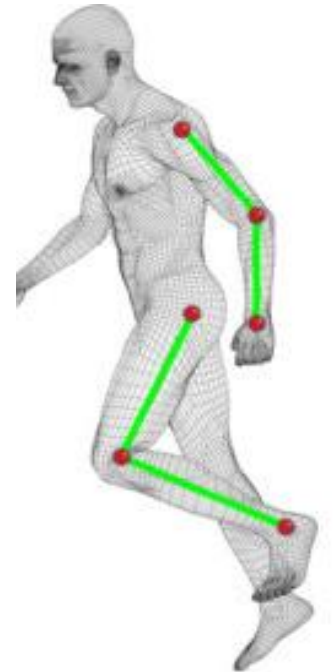
- Pain and isolation,
- Lack of self-confidence
- Monitoring and Assistance in home environment
- Miscommunication caused by different languages and cultures
- High costs
- Lack of standards



The Solution

Wearable Sensors Net for monitoring limb's movement during everyday life.

- Indoor/outdoor, portable & easy to use
- Non invasive
- Connected (with doctor, family, ...)
- Help in monitoring activity, mobility, diseases and rehabilitation
- 3D VR/AR
- Third age fitness
- Multilingual Big Data Platform

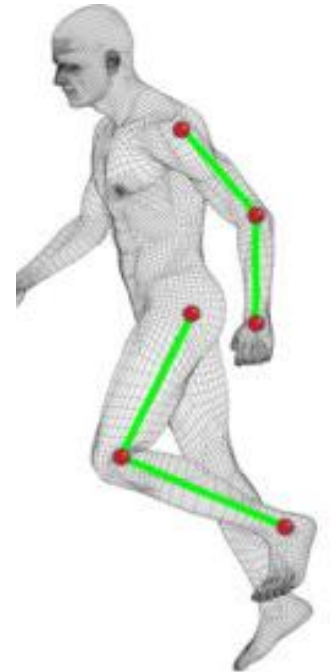


Project idea

The Innovation

Technology innovation: e.g. Kinematic, Artificial Intelligence, Multiplayer games, Cognitive Science, Multilingual Big Data, Open Innovation 2.0, Circular Economy of Knowledge, e-Mentoring

Socio-economic innovation: e.g. Improving Quality of Life, Preserve Health and Functional Capabilities, Guided Exercises, Remote Assistance, Increased Socialisation, Experience & Knowledge Transfer, boosting Health-Care Economy



Project idea

Partnership

- Users and early adopters from all the UE
 - ✓ Hospitals
 - ✓ Medical and rehabilitation clinics
 - ✓ Homecare providers
 - ✓ Applications in other fields
- Orthopedic industries
- Physiotherapists
- Roll-Out partners



Contact: SWHARD Srl, Genova, Italia, Paolo.Dondero@swhard.com, tel:+39 010 8686910